

Product Name: Mini Wi-Fi RGB Controller + RF 21Keys Remote Controller



Product Specification:

Category	LED Controller
Domination Principle	WiFi
APP	Magic Home Pro
Operation Platform	Android 4.0 or IOS 9.0 or higher
LED Drive Type	Constant voltage: MOSFET
Channels	3
Input Voltage	DC (9-28V)
Max Output Power	144W
Work For	LED Strip or other constant voltage
Light Connect Method	Common Anode
IP Rating	IP20
Working Temperature	-20-55°C
Control Distance	Visible distance 30M
Certification	CE, RoHS, FCC

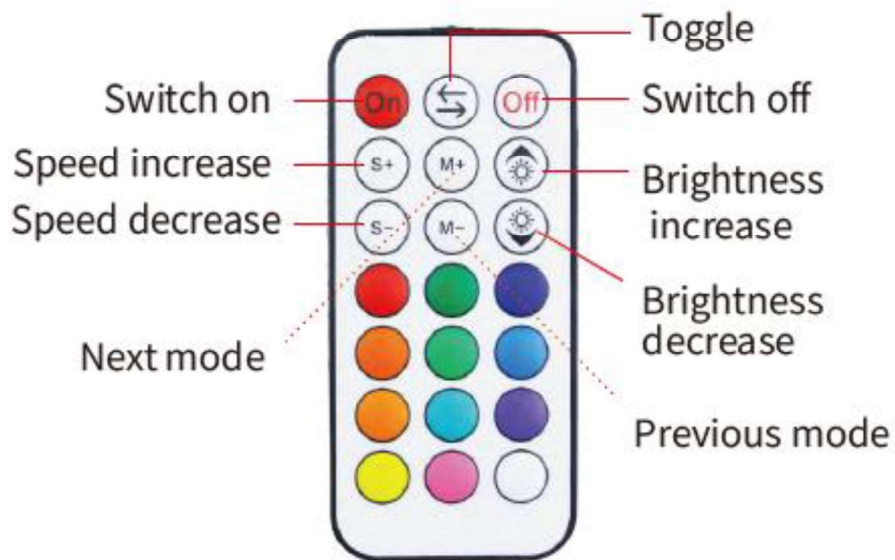
Connecting the Power Adapter to the Control Box



The LED strip is pre installed under the hearth
Connect the power adapter to the LED control box as below



Remote handset operation



Please ensure battery is inserted correctly into the handset before use.

APP Installation Instructions for IOS

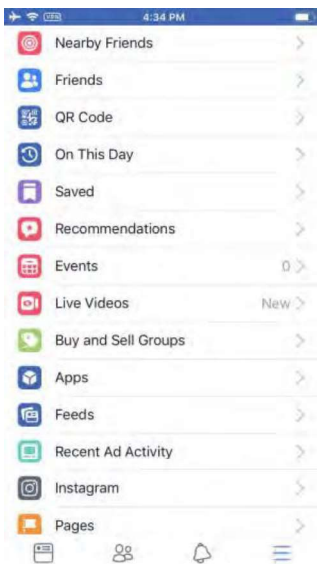
Method 1: Search Magic Home Pro in "APP Store" and download the app.



Method 2: Download the APP by scanning the below QR code for free.



Installation details as below



Step 1



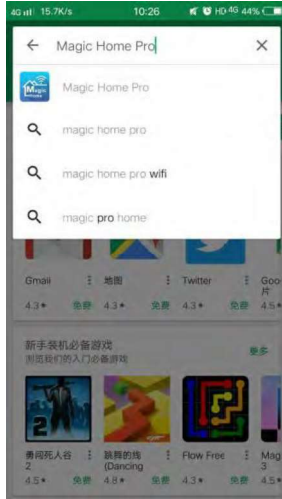
Step 2



Step 3

APP Installation Instructions for Android

Method 1: In Google Play Store or from a browser search for “Magic Home Pro” and install as below.



Step 1

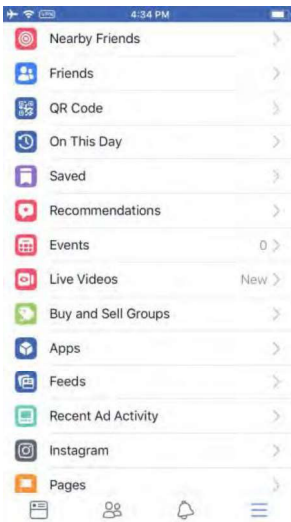


Step 2

Method 2: Download the APP by scanning the below QR code for free



Installation details as below



Step 1



Step 2



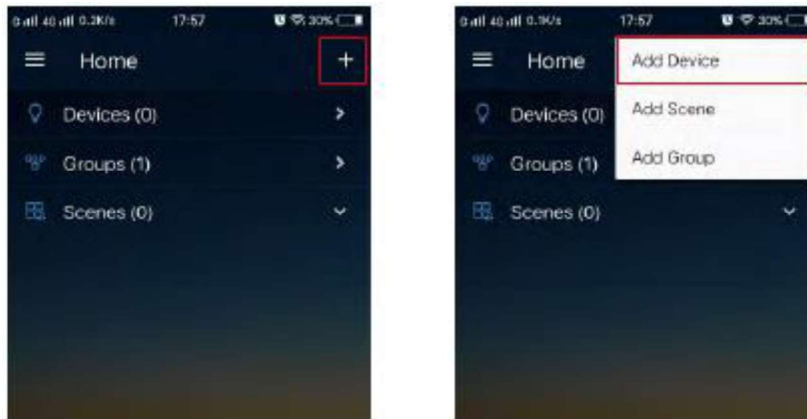
Step 3

Instructions

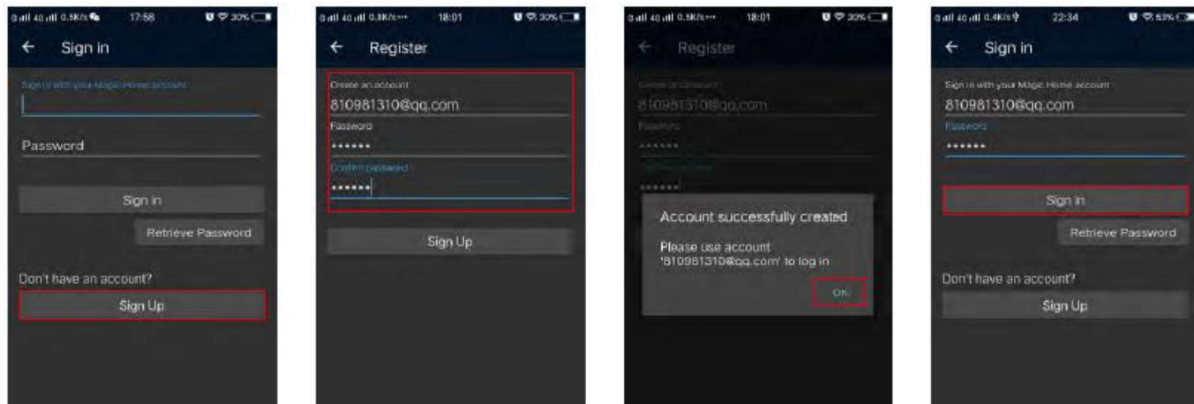
There are three different ways to connect the controller after it has been connected to the power supply.

a) Wi-Fi mode: This mode needs you to register and login. Make sure the controller has power and follow the below steps 1, 2 and 3. Then complete the connection described in step "c"

1. Click "+" in the upper right corner and click "add device"



2. Register and login to the account

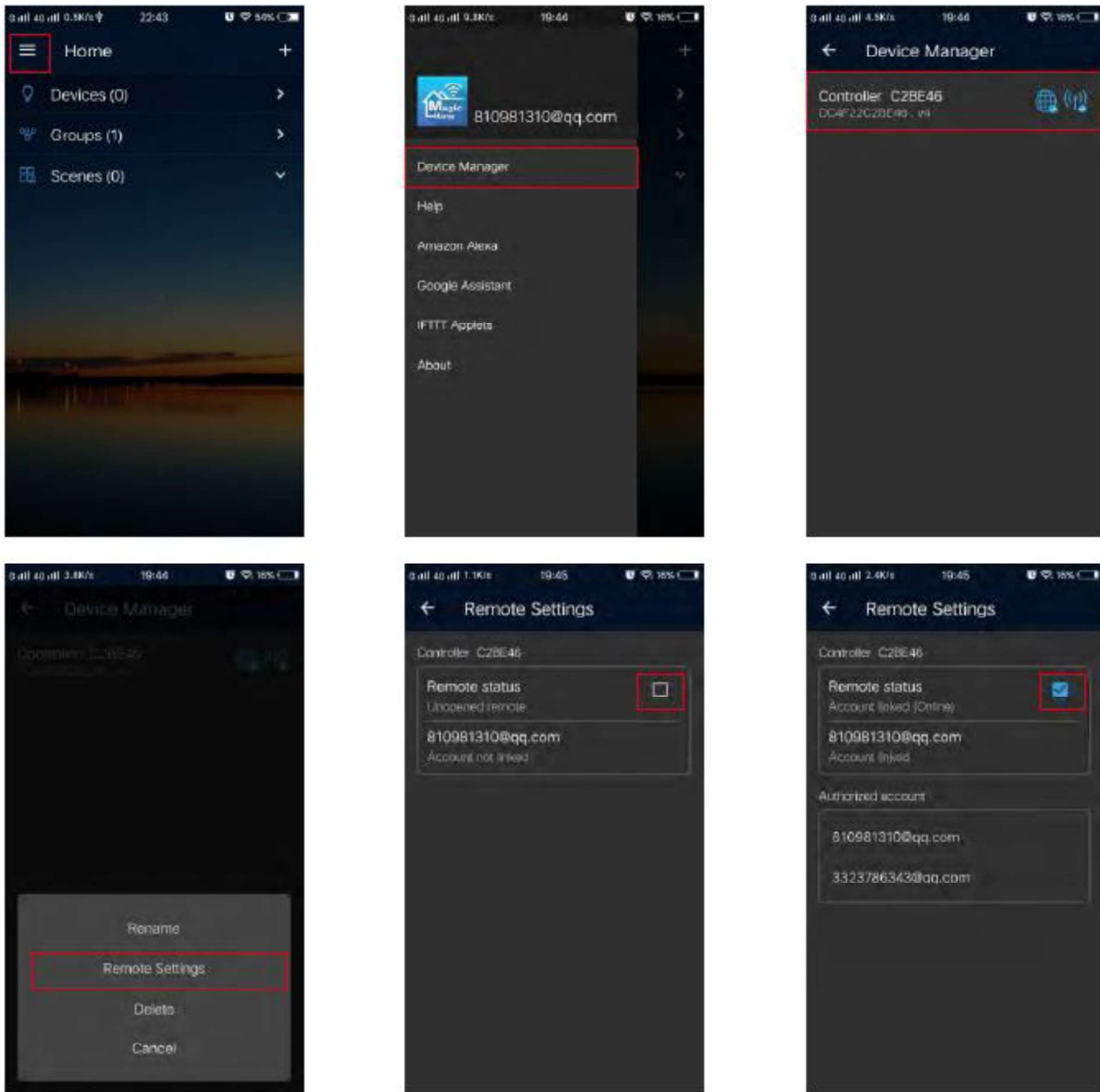


3. Repeat step one

4. Connect the device to the router



b) Remote control via Internet you can locate the Wi-Fi controller via the internet from anywhere in the world In Wi-Fi mode. Keep the Wi-Fi router online and you can control your lights with the APP as long as there's Wi-Fi/3G/4G internet for your smartphone.



c) 1 to 1 Mode. Open your mobile Wi-Fi network and find "LEDnet*****" signal and connect. Once connected open Magic Home Pro APP.



If the network connection has been successful you can enter the APP.

For troubleshooting refer to page 16 - 17

PRODUCT FUNCTION INTRODUCTION

Support 16 million colour control and brightness adjustment.

You can adjust both the colour RGB(Red/Green/Blue) as well as the brightness of the colour. In this function you can adjust and store 5 of your own created colours and brightness levels. You can save your created colours by pressing and holding the "DIY" button. The adjusted colour/brightness will be stored and displayed in the "DIY" boxes. You can recall the colour/brightness if you press on one of the five DIY boxes.

On the display in the top left you will see the individual channels R/G/B these can be adjusted separately from 0-255 to obtain the desired colour.



RGBW: In addition to the functions in the RGB mode, the warm white setting can be adjusted separately. (Warm White & RGB channels cannot be used simultaneously.)

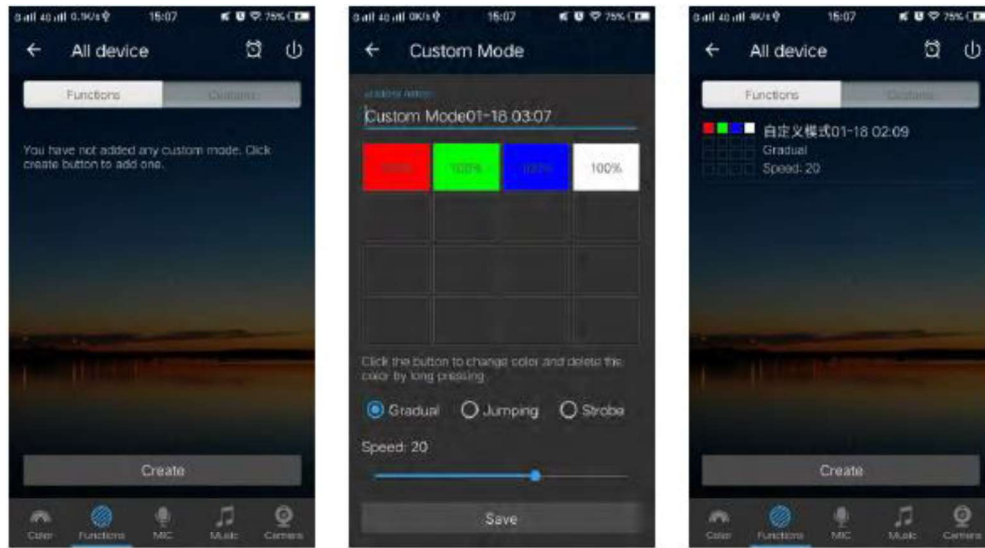
Function

In this capacity, 20 gradients are pre-set. In addition, you can adjust the speed of the gradients with a slider, with the keys M+/M- or scroll up and down to switch between the gradient modes.



Support for your customised colours

In the DIY function, select your favourite colour(s) you can then choose the gradual, jump or strobe functions. Press function “custom” and then “Create”. By briefly pressing one of the coloured rectangles you can change the colour. By pressing and holding on the colour you can delete it. You can add up to 16 colours in a sequence. After setting the colour, speed and name, press “save” on the top right. Now you can see your personal colour in the selection mode. You can create unlimited changing modes and they can always be edited or deleted.

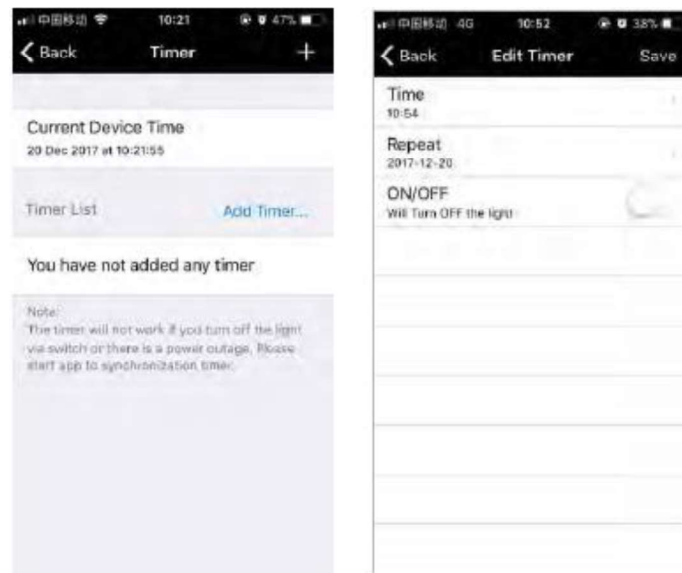


Group Feature

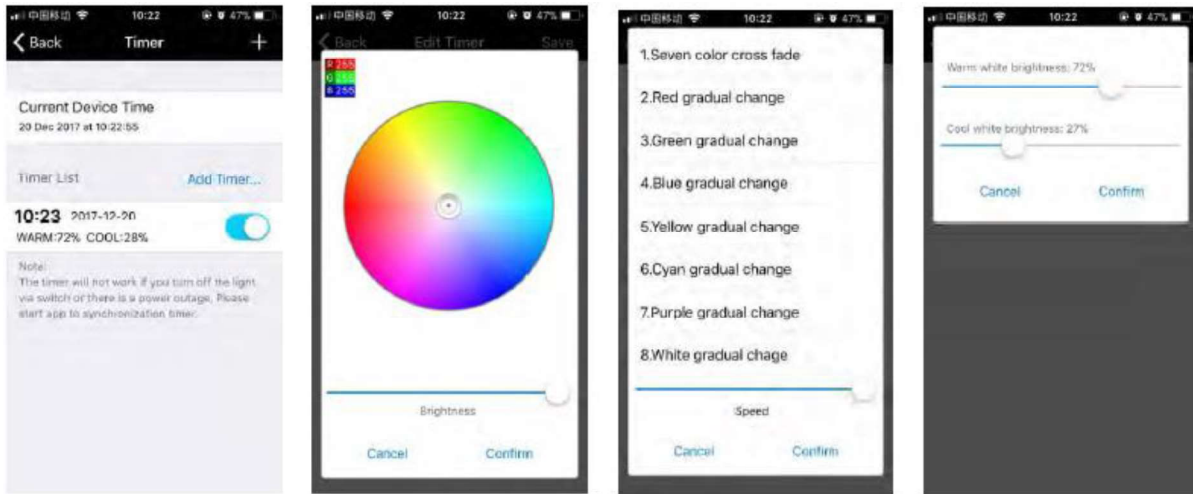
Zengge controllers (Magic Home Pro) allows you to create different groups to control more than one device, for example, if you have 2 controller units, you can use one system in your living room and the other in a different room. The grouping function allows you to either control these systems individually or to group them together as one unit.

Light timer

You can have your lights automatically turn on or off in a specified time by setting up the timer.



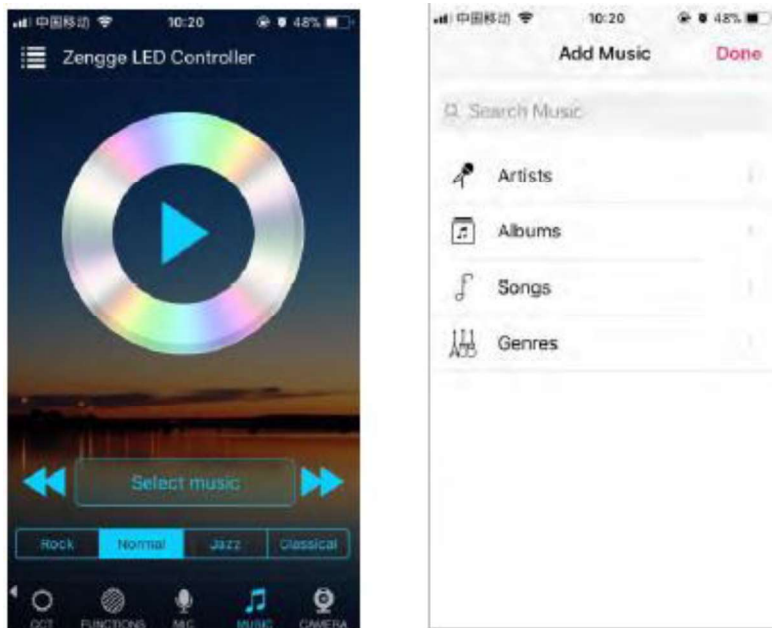
The controller has a built in timer function. To use this function press the ON/OFF switch next to the clock icon. Then the selection menu will be shown with time, Repeat (Mon-Sun), ON/OFF switch and the optional Model (colour setting, Brightness and gradient program.) The timer will not operate when the power supply is interrupted. In this case, start the APP to resynchronize.



Light and music rhythm synchronization function

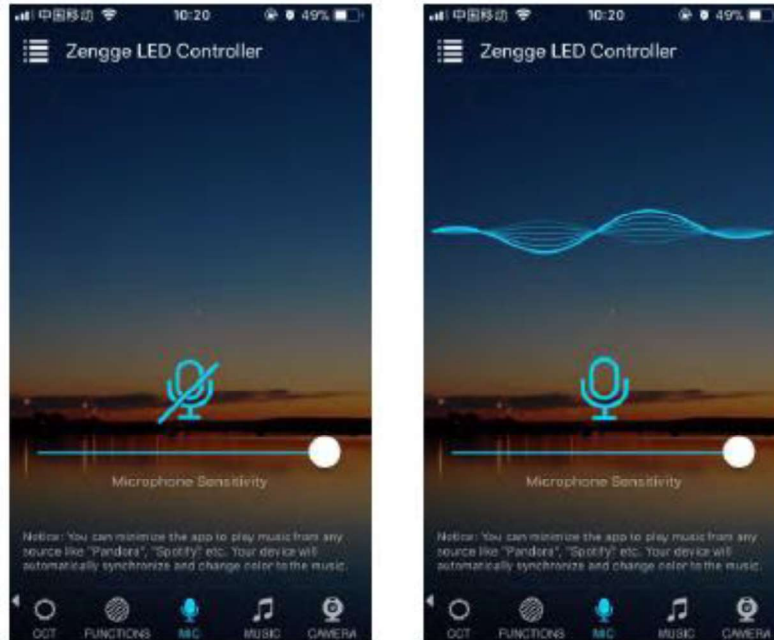
In this function, you can set the connected LED's to come on to the rhythm of the music played on the smartphone or tablet. To do this, select the menu item "select music" and then select your music library on your smartphone or tablet. There are four main modes for four music styles: ROCK, NORMAL, Default, JAZZ or CLASSICAL. IOS system will need to download music files from iTunes or copy audio files from your computer's iTunes to your iPhone. You can select the music when you open the APP music mode to synchronize the lights and music rhythm. The light colour changes automatically with the rhythm of the music.

Android system needs to download the music files to the phone for use.



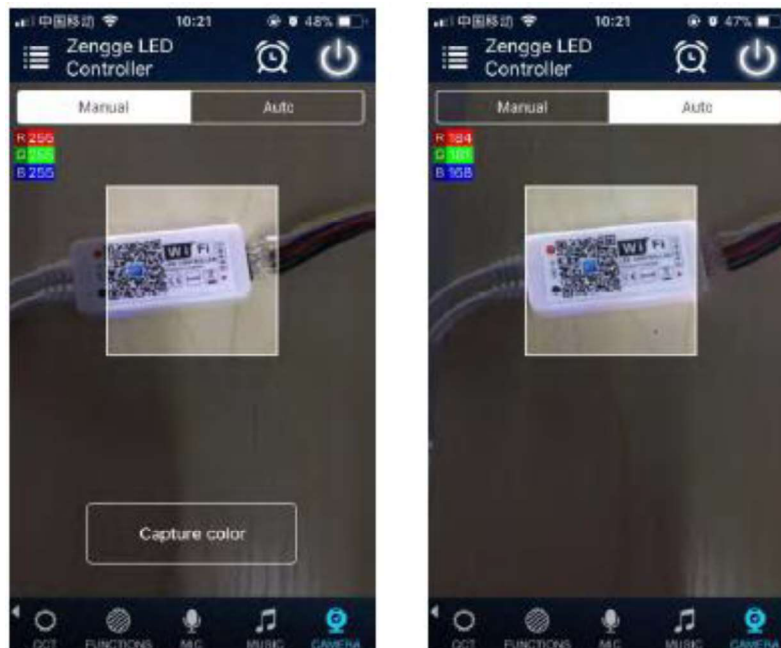
Microphone function

Click the “Disco” interface of the APP. In this function the connected LED lights light up depending on the volume/noise from the microphone. This also works when playing music or there is a noise from outside, the light will begin “dancing”. The microphone sensitivity can be adjusted by the slider.



Background colour function of camera

In this function, you can select a colour with your smartphone or tablet by pointing the camera to an object. The selected colour will be display from the connected LED lights in the RGB spectrum. This can be done manually transmitted to the LED lights with “Manual Capture colour” or switch to “Auto” and the LED light will immediately show the colour which has been selected on the camera.

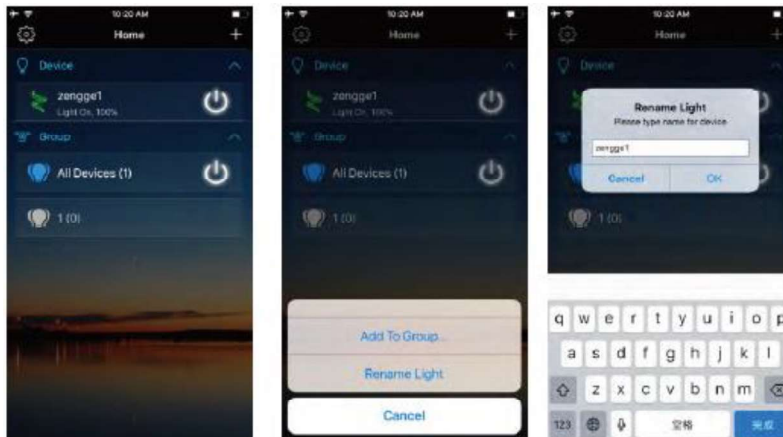




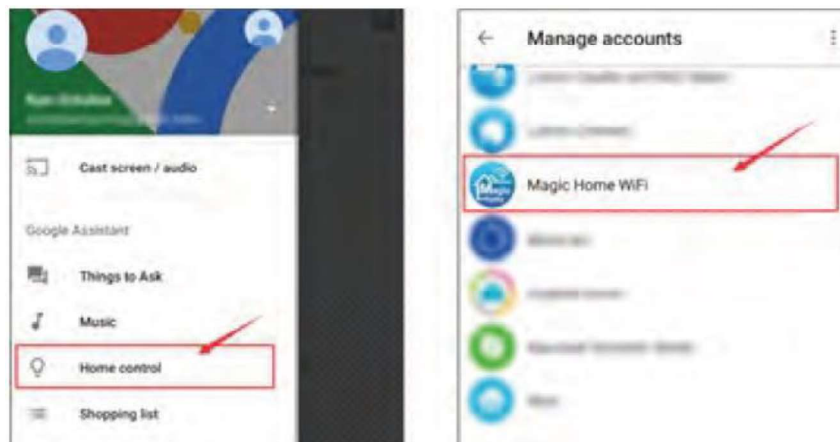
Step 1: Create your Magic Home cloud account and sign in so you can control your smart lights with the Google Assistant or control them remotely.



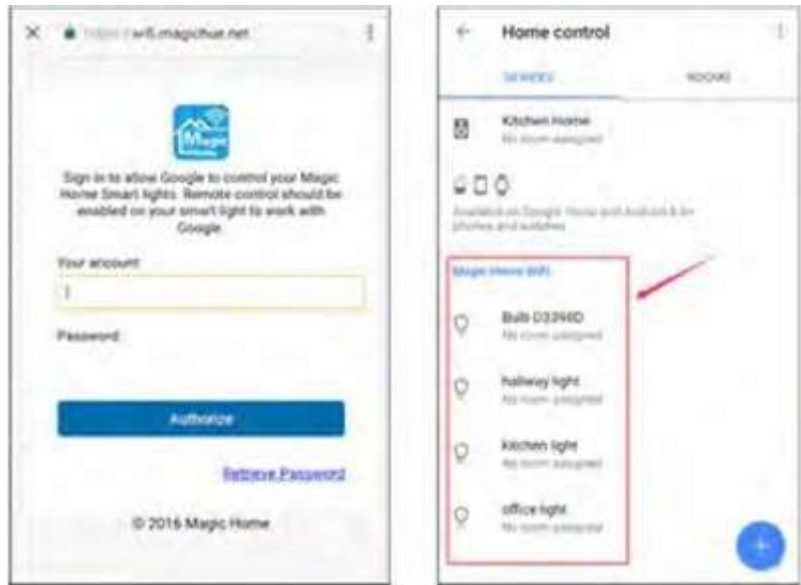
Step 2: Add your lights and modify the name. Make sure there is at least one smart light in the device list and enable it for "Remote Control". On the Home" page press and hold on the lights to rename them.



Step 3: Add Home Control Action
Click "Home Control" on the "Home APP". Select "Magic Home WiFi" sign in using the username and password used to create your Magic Home Pro APP account.



Step 4: Login with your app account. Enter your app account and password to finish the account linking. (Use the Magic Home cloud account you used on step 1). Your lights will be listed on "Home Control" interface.



Step 5: Control your lights. Once you have finished the setup. You can control your lights by issuing voice commands.

Supported Commands:
Say "Ok Google" or "Hey Google",
then..
Turn on <light name>
Dim <light name>
Brighten <light name>
Set <light name> to [50%]
Dim/Brighten <light name> by [50%]
Turn <light name> [colour]
Turn on/off all the lights
Is <light name> on?

Step 6: Changing the colours of your lights
Colour Options for Google Home control on your smart device:

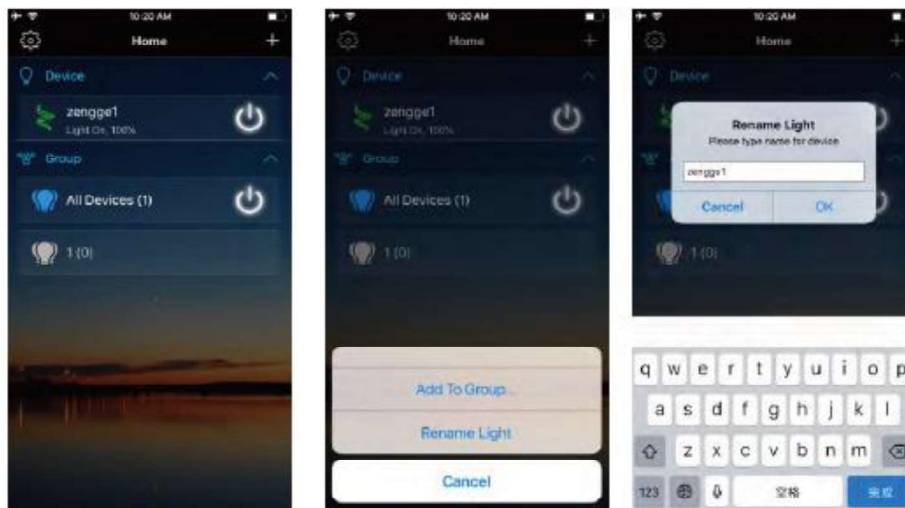
Blue	Orange
Crimson	Purple
Cyan	Red
Fuchsia	Salmon
Gold	Sky Blue
Green	Teal
Lavender	Turquoise
Lime	Violet
Magenta	Yellow



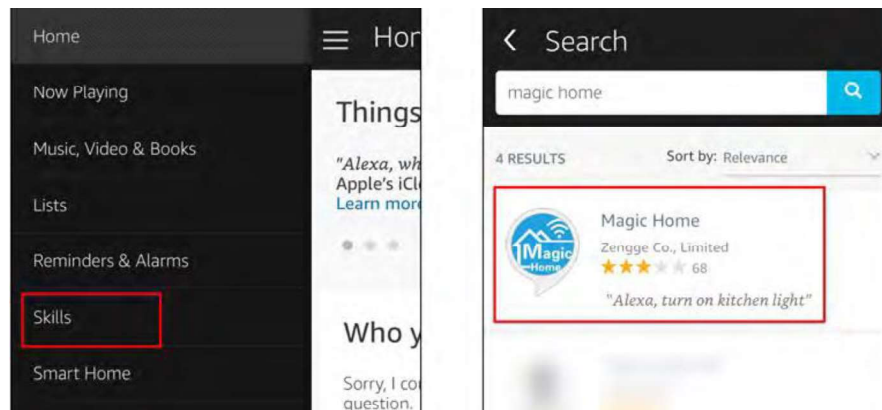
Step 1: Create your Magic Home cloud account in order to control your smart lights with the Amazon Echo or control them remotely, you need to create a Magic Home cloud account and sign in.



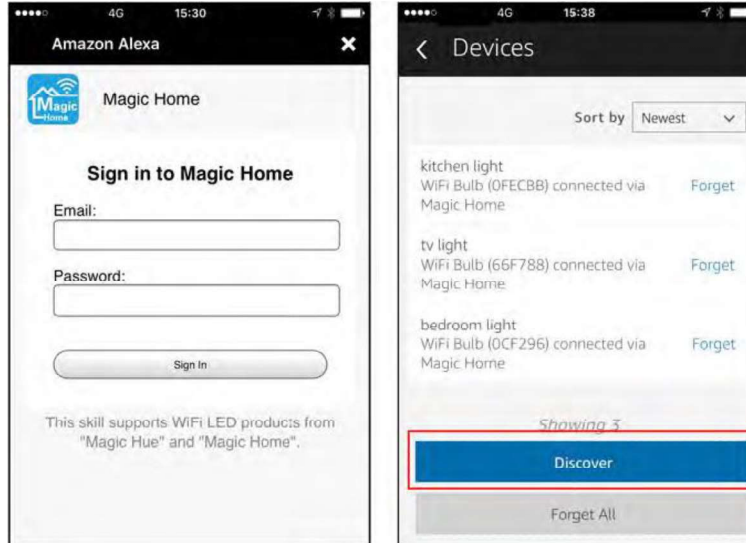
Step 2: Add your lights and modify the name. Make sure there is at least one smart light in device list, enable your lights for remote control. On the "Home" page, long press on the light to rename.



Step 3: Enable Alexa Skill. The next step is to download the Amazon Alexa app, open the Amazon Alexa app and under the skills section search for the " Magic Home" skill. The account username and password must be same as you used to create the Magic Home Pro APP account.



Step 4: Login and Discover Devices. Use your Magic Home cloud account you created in step 1 to sign in to "Magic Home" Skill. The next step is to discover your smart lights from the Alexa app. You can say "Alexa discover devices". Once Alexa has completed discovering your smart lights they will be shown in the Smart Home section of the Alexa app.



Step 5: Control your lights. Once you have finished the setup. You can control your lights by issuing voice commands.

- Supported Commands:
- Alexa, set [light name] to [0-100]%
 - Alexa, turn [light name] on/off
 - Alexa, dim/brighten [light name]
 - Alexa, increase/decrease [light name]
 - Alexa, set the [light name] light to red
 - Alexa, change the [light name] to the colour blue
 - Alexa, make the [light name] warm white
 - Alexa, change the [light name] to the cool white
 - Alexa, set the [light name] to daylight

Step 6: Changing the colours of your lights
Colour Options for Alexa control of your smart device:

- | | |
|----------|-----------|
| Blue | Orange |
| Crimson | Purple |
| Cyan | Red |
| Fuchsia | Salmon |
| Gold | Sky Blue |
| Green | Teal |
| Lavender | Turquoise |
| Lime | Violet |
| Magenta | Yellow |

Remote control

- 1 We have maintained a long-term co-operation with the "US Ali Cloud Terminal" in the USA to provide our customers with better remote control services.
2. When and only when you register and login to your account in the Magic Home Pro APP, no matter where you are you can still control your home lights with the APP as long as there's WiFi / 2G / 3G / 4G internet for your smart phone.
3. Note: After the controller is bound to your home WIFI, it will not display on your WIFI list anymore.

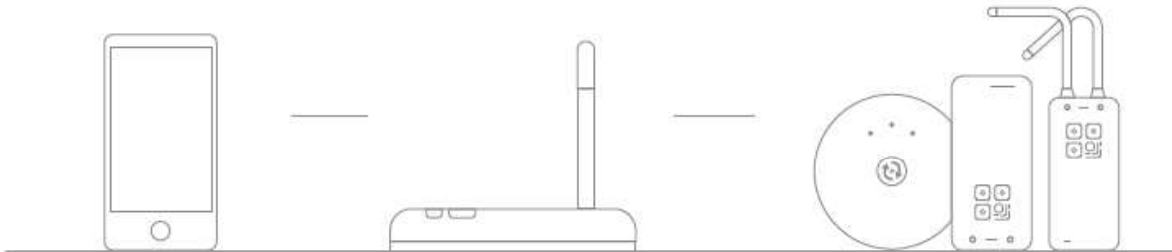
FAQ

1. Why can't my smart phone find the Wi-Fi signal of controller?
Please check if the controller has been connected to the router, check the Wi-Fi function on your phone is on and works properly.
2. Why can't the controller connect with router?
Firstly, please ensure to input the correct Wi-Fi password. If the password is correct and the controller still fails to connect with router, please shut down the controller and router, wait 30 seconds then turn both router and controller back on. Wait for 2 minutes before you start the APP. If this does not resolve the problem please restore factory defaults.
3. Why doesn't the controller show in the APP after I choose the Wi-Fi signal of the controller in the phone setting?
Please refresh the APP device list by sliding down on the screen. If control still does not show please try to shut down the smart Internet section of your smart phone. This is to avoid automatically exiting the controller signal connection because the network is unavailable.
4. How to reset the LED receiver?
Reset the WiFi receiver by unplugging and plugging back in the connector repeatedly 4 times, as shown below. Then reconnect the power supply to the LED receiver.
5. Replacement remote control does not operate lights.
The remote will need to be paired with the receiver unit, to do this disconnect the power supply to the lights, ensure there is a battery in the handset, plug in the power supply to the receiver unit and within 5 seconds press and hold the "ON" button on the remote until a white light continues to flash. The remote is now paired.

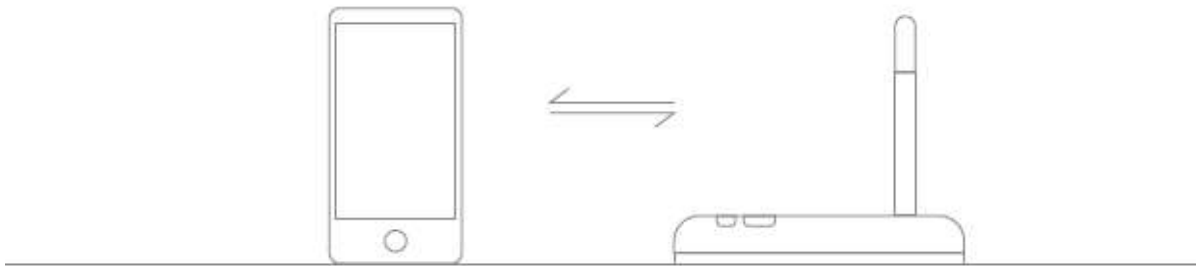


Please pay attention when adding device:

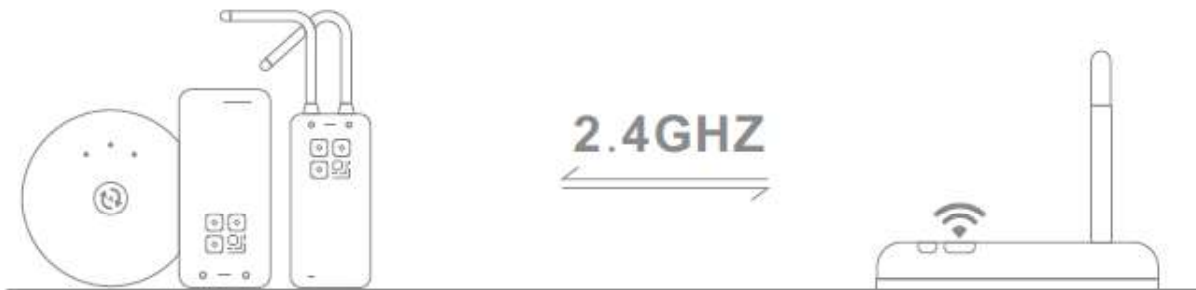
1. Make sure that the device is turned on and working.
2. Ensure that the equipment is in the state of waiting to be connected.
3. Make sure the controller, smart phone & router are close together.



4. Ensure that the phone can be connected with the router.



5. Ensure that you have entered the correct password for your router.
6. Make sure the device is connected to the 2.4GHZ Wi-Fi band and is broadcasting. The router cannot be set to hidden.



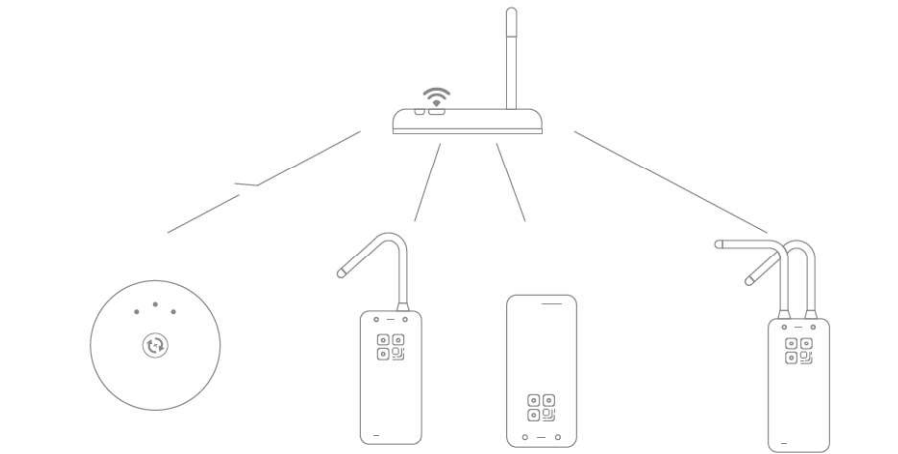
7. Make sure that the encryption of router setting is WPA2-PSK and the type of certification is AES or both are set to automatic. Wireless mode cannot be 11n only.



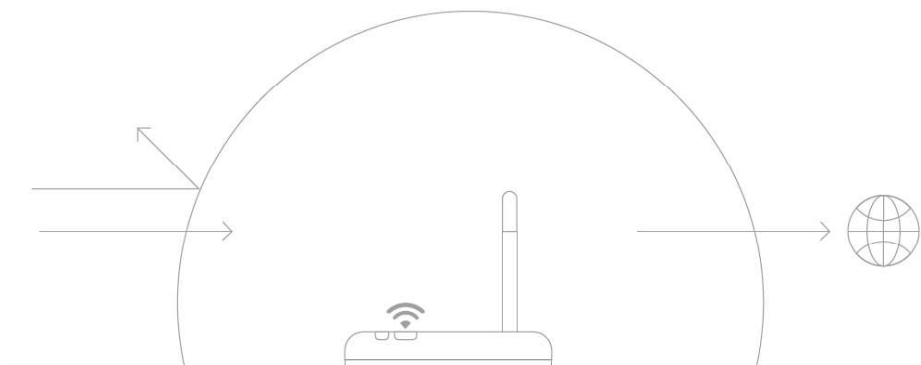
8. Make sure that the Wi-Fi name consist of English letters.

CMCC		📶	➤
客厅	✘	📶	➤
Zengge-Office1		📶	➤
Zengge-Office2		📶	➤
Zengge-Office3		📶	➤

9. If the router reaches its device limit, try to shut down the Wi-Fi function of some devices and clear the channel in order to reconfigure.



10. If the router opens wireless MAC address filter, try to remove the device out of router MAC filter list and make sure the router does not forbid networking of the device.



ATTENTION

1. Please use the product in a dry environment.
2. Please use the input voltage at 5-28V DC voltage, do not directly connect into 220V AC.
3. The product is a common anode connection. The wrong connection will cause a malfunction.