

bemodern

FIRES | FIREPLACES

P R  Z M

REVOLUTIONIZING FLAMES

Marble suites Pryzm 750, 1000



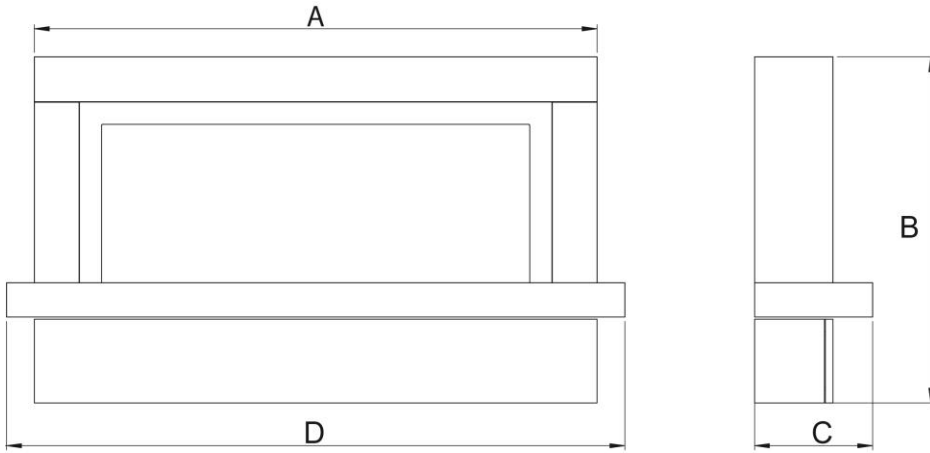
Instructions for installation and use

Patent pending
UK Registered Design

Contents

Tech Specs	3
What's in the Box	4
Installation – Marble	5 - 7
Maintenance	8

Technical Specification



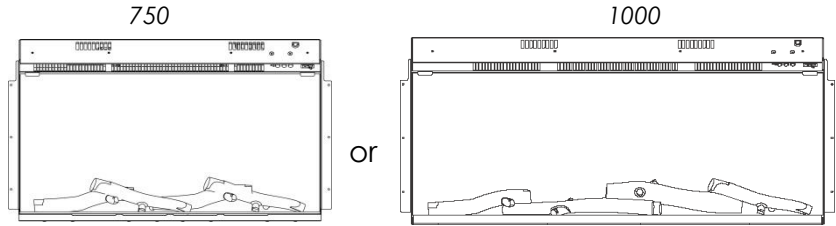
Fire	Description	Logs	Dimensions			
			A	B	C	D
57" IMPERO PRYZM 5D 1000 L	Micro Marble Floor standing: complete with plinth	4 LRG	1320mm	810mm	280mm	1450mm
47" IMPERO PRYZM 5D 750 L		4 SML	1070mm	810mm	280mm	1200mm
52" CABRINA PRYZM 5D 750 P	Micro Marble Floor standing: complete with hearth	4 SML	1320mm	1040mm	400mm	1320mm
48" ALESSO PRYZM 5D 750 P	Micro Marble Floor standing: complete with hearth	4 SML	1220mm	1000mm	400mm	1220mm

What's in the box(s)

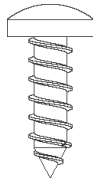
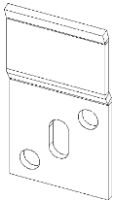
Installation Booklet x2



Un-installed Fire



Mantle Hooks (x2) 15mmScrews (x6) Batteries (x2)



Logs
4 Logs Located under the surround or in the leg of surround (dependent on model)



Remote control



Installation – Marble with Plinth

Note: the surround is a two adult person lift. A second person will be required to support the surround.

1. Secure hearth

Before the surround can be installed, consideration will need to be given routing the power supply to the fire. This will affect the stages of the installation process. We advise a qualified electrician conduct any electrical parts of the installation.

2. Secure the Hearth

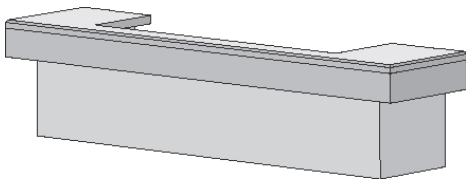


Diagram 6

Ensure that the hearth is level and firmly secured in the desired position on a bed of suitable mortar. **See diagram 6**

3. Angle Brackets

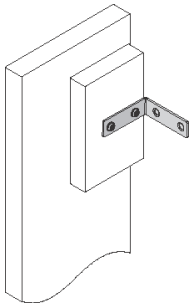


Diagram 7

The top of the leg sections have angle brackets fitted for securing direct to the wall **(see diagram 7)**. These fixing brackets will prevent the surround from detaching itself from the wall.

4. Top Bracket

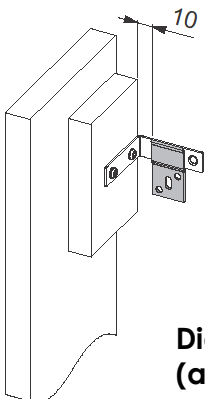


Diagram 8
(all dimension in mm)

Diagram 8 illustrates how the angle brackets (fitted to the internal leg of the surround) are secured behind the hook brackets at the final fitting stage. This is achieved by carefully positioning the surround on the hearth in its intended position and marking the position of the hook bracket screw holes through the central opening in the surround.

Installation – Marble *continued*

5. Fix Hook Brackets

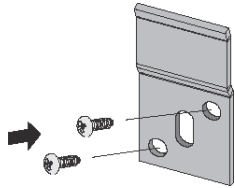


Diagram 9

Remove the surround and securely fix the hook brackets to the wall using appropriate fixings (**see 'Important Note' on page 7**).

Prior to installing the marble surround please remove the magnetic trim and place safely for use in step 8.

6. Secure surround in place

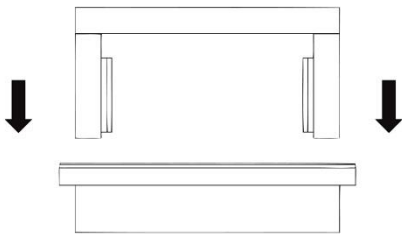


Diagram 10

Once the wall brackets are secured in place, carefully lift the surround over the hearth and lower the surround down, locating the angled brackets on the hook brackets securely.

7. Installing the fire

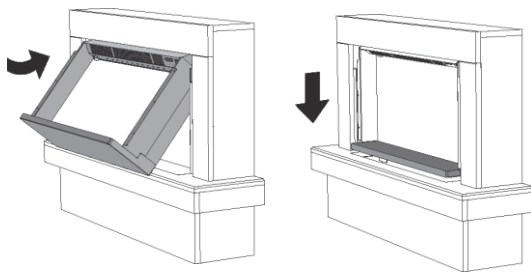


Diagram 11

The Pryzm fire can be installed in the surround by lifting the fire at a slight angle to allow the fire to be positioned in the upper section of the surround opening. Then angle the rear of the fire in to the surround, lowering the fire down on the plinth support brackets. Great care must be taken, not to crush or damage the cable on installation or damage the hearth.

Note: The fire power cable may need positioning in place prior to the installation of the surround upper body, if the plug is to be used.

8. Secure fire

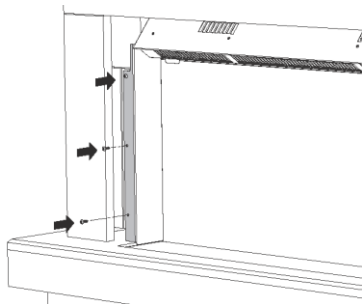


Diagram 12

To secure the fire in place, pilot hole the fixing locations then screw the fire to the timber mounting panels through the fire mounting points (6 fixing screws are supplied). Once the fire is secured in position the fire trim can then be placed in position. The trim is a magnetic fixing.

Installation – Marble *continued*

9. Installation Complete

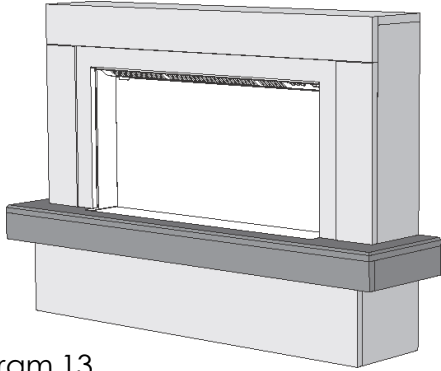


Diagram 13

For dressing the logs and fire operation,
please refer to the separate fire instructions.

Maintenance

WARNING: Before any maintenance or whilst cleaning the exterior of the fireplace, the unit should be disconnected from the power supply until it has cooled down.

Cleaning the Fire

Cleaning or polishing products are not recommended. Fingerprints or other marks on the front glass panel can be removed by a piece of soft, damp, lint-free cloth with a good quality household glass cleaner. The front glass panel should always be completely dried with a clean, lint-free cloth or paper towel.

CAUTION: Abrasive cleaners should not be used on the glass panel. Liquids should not be sprayed directly onto any surface of the unit.

Troubleshooting

Should you have any queries regarding this product please contact Customer Services on 0191 4300901 or email us at customerservices@bemodern.co.uk

Recycling

All cardboard packing is recyclable

IMPORTANT NOTE:

Wall fixings (i.e. screws/wall plugs etc.) are not supplied as these are crucially dependent upon the type of wall and surface the surround is going to be fixed too. The installer is therefore responsible for ensuring that suitable fittings are used according to the particular model to be installed as well as individual fitting situations and environments. All mechanical fixings, for holding the suite in position, must be secured to a solid wall or structure.